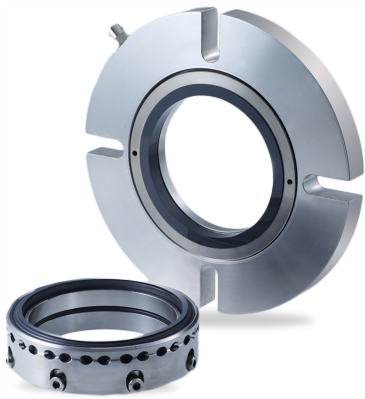


RELY ON EXCELLENCE

SeccoMix1-E32

Mechanical seals | Agitator seals | Dry running seals



Features

- Retrofit for JC Type 32
- Dry-running single seal
- For top entry drives, on request side drive possible
- Balanced
- Multiple springs rotating
- Independent of direction of rotation
- Available in metric and imperial sizes

Advantages

- Available as semi-cartridge
- No supply system required
- No product contamination with barrier fluid
- Low wear due to optimized seal face load
- Suitable for vacuum operation
- Friction-locked connection to the shaft
- ATEX certification available on request
- Inherently safe, even without temperature monitoring

Operating range

Shaft diameter(SI): d1 = 40 ... 80 mm

Shaft diameter (Imperial): d1 = 1.000" ... 2.000"

Pressure: p1 = vacuum ... 6 bar (87 PSI)

Temperature: -20 °C ... +200 (250*) °C
(-4 °F ... +392 (482*) °F)

Sliding velocity: vg = 0 ... 2 m/s (0 ... 6 ft/s)

Axial movement: ±1,5 mm

Radial movement: ±1,5 mm

* with cooling flange

Applications outside of this area of use are available on request.

! It should be noted that the extremal values of each operating parameter cannot be applied at the same time because of their interaction.

Materials

Seal face: Carbon graphite, FDA compliant

Seat: Silicon carbide

Secondary seals and metal parts according to application and customer's specifications.

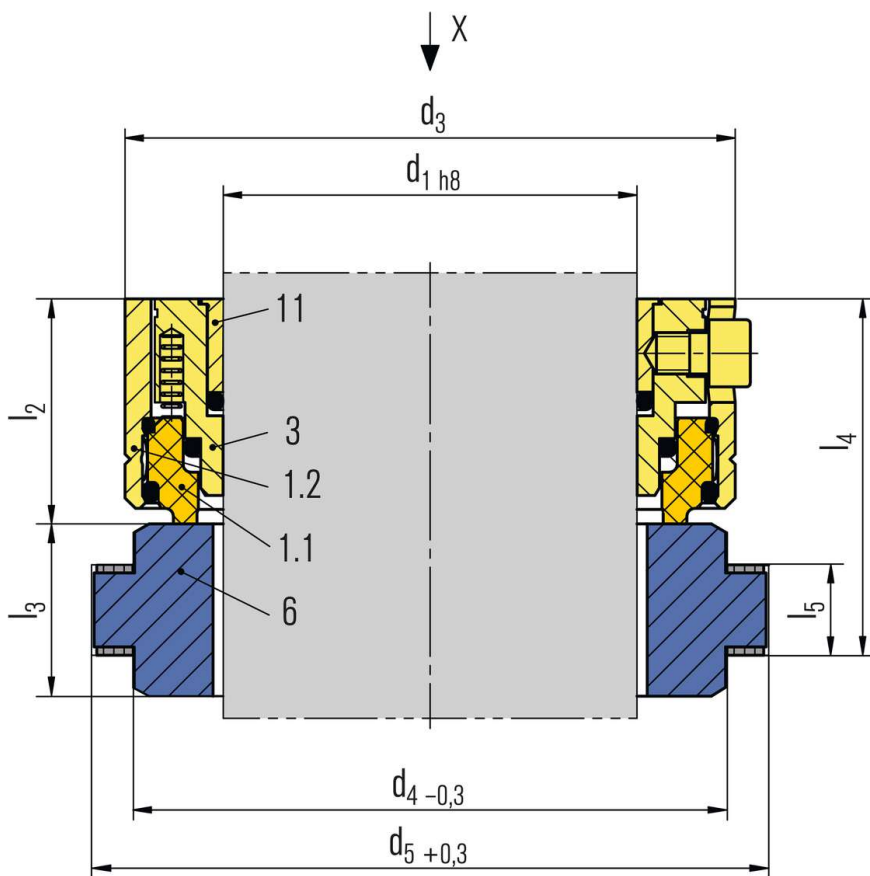
Standards and approvals

- FDA
- ATEX

Recommended applications

- Chemical industry
- Pharmaceutical industry
- Food and beverage industry
- Non-toxic media
- Agitators
- Mixers
- Reactors

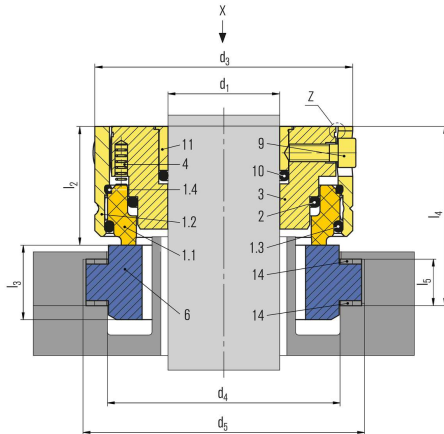
RELY ON EXCELLENCE



- 1.1, 1.2 Seal face with face housing
- 3 Drive collar
- 6 Seat
- 11 Clamping ring

RELY ON EXCELLENCE

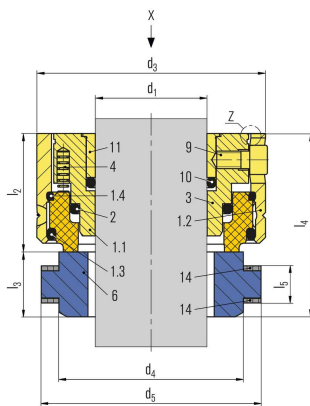
Installation, details, options



SeccoMix 1-11-E32 imperial, with sleeve

In addition, the SeccoMix 1-11-E32 is equipped in addition with a sleeve to trap any abrasive particles from the seal face. This prevents contamination of the medium in the container. Note: Diameters (d2 to d5) increase to next size.

Product variants



SeccoMix 1-E32, imperial

In the imperial version, the clamping ring, the driver and the seat have been adapted to allow easy integration into systems based on the imperial measurement system.

Dimensions

d ₁	d ₃	d ₄	d ₅	l ₂	l ₃	l ₄	l ₅
1.000"	2.480"	1.937"	2.281"	1.594"	0.811"	2.250"	0.500"
1.125"	2.677"	2.000"	2.406"	1.594"	0.811"	2.250"	0.500"
1.500"	3.071"	2.500"	3.031"	1.594"	0.874"	2.281"	0.500"
2.000"	3.465"	3.125"	3.781"	1.594"	1.000"	2.407"	0.625"
2.500"	3.858"	2.697"	3.625"	1.713"	1.000"	2.526"	0.625"

SeccoMix 1-E32 - Dimensions in inches

RELY ON EXCELLENCE

Dimensions

d ₁	d ₃	d ₄	d ₅	l ₂	l ₃	l ₄	l ₅
40	78	66.68	80	40.5	27	61.1	14.2
45	88	79.38	96	40.5	33.3	65.9	17.5
50	88	79.38	96	40.5	33.3	65.9	17.5
60	98	88.9	105	40.5	33.3	65.9	17.5
80	118	114.3	130	43.5	33.3	68.9	17.5

SeccoMix 1-E32 - Dimensions in millimeter